

MAR/APR 2024



INSIDE:



TransQuip Forklift Safety Light, Red, Halo/Arc Pattern
PAGE 2



Round Solar Powered Road Stud, White
PAGE 4



Guardian Portable Traffic Lights, Set Of 2
PAGE 10

FEATURED:



Code: 3709

Small rubber wheel chock, pair

- Small rubber wheel chock, sold in pairs.
- High density rubber with yellow reflective strips.
- 3kg each.
- Your own risk assessment must be carried out before using this product.
- Dimension: 260 (L) x 160 (W) x 190 (H) mm



\$66.17 per pair Normally \$82.71 per pair

FREE

Icey-Tek cooler backpack when you spend a total of \$5000+GST or more within one month

March and April 2024 only

- Olive green
- 25ltr capacity
- Heavy duty nylon shell
- Worth \$199ea!
- 100% waterproof inside and out
- Padded adjustable straps and chest strap
- Anti-microbial interior- mould resistant and easy to clean
- Keeps items cool for over 24 hours!

Your total spend will be calculated at the end of each month; you cannot combine your two months spend together. Backpacks will be delivered early the following month.



FORKLIFT WARNING LIGHTS



Code: 4706

TransQuip Forklift Safety Light, Red, Halo/Arc Pattern

- Aluminium alloy housing with transparent polycarbonate lens.
- 98mm high (including bracket), 67mm wide and 48mm deep.
- 300mm long cable tail included.
- Arc / halo beam pattern.
- 3 watts.
- 10-80V.
- 40 degrees to 65 degrees.
- IP67 rated.
- EMC-R10.
- CE: EN50498.
- Comes with bracket.

\$135.60ea



Sentinel Forklift Safety LED line lights

- Aluminum casing with polycarbonate lense
- Line light beam pattern
- 10watt
- 10-80v DC
- Voltage - 10-80V
- Function - Warning Line Work Light
- Mounting - M6 Screw Mount
- Connector - Cable,L=500mm
- Approval - EMC (ECE R10)
- Sealing - Potting
- Waterproof Operating - IP67
- Lens Material - PC
- Available in red & blue

\$101.83ea Normally \$113.14ea



Code: 4709 Magnet Mount

- Comes with magnet for easy setup - fit, connect and go!
- Red light.



Code: 4713

- Available in red & blue.
- Permanent mount.



Code: 4714

Forklift Safety Spot Light,LED,10-80V

- Voltage - 10-80V
- Function - Spot work Light
- Mounting - Bracket Mount
- Connector - Cable,L=520mm
- Approval - EMC
- Sealing - Potting
- Warranty - 3 years
- Waterproof Operating - IP67
- Available in red & blue
- Temperature - -40 to +65 degrees Celsius
- Lens Material - PC,Transparent

\$134.72ea Normally \$179.62ea



MICRO BARLIGHTS



- All SAE Class 1, EMC, R65 or CISPR 15 compliant
- Radio interference free
- Top quality barlights you can fit and forget!
- Save your battery! Very low current draw!
- Save your fuel! You can leave these flashing without leaving your vehicle's engine idling
- Multi Voltage: 12 and 24 volt

- Amber LED's when activated
- Many different flash patterns
- Tough polycarbonate lens
- Permanent or magnetic mounting options, brackets included with permanent mounts
- Can be synchronised to flash together
- Low profile to reduce wind drag, and smart looking



9903 MC



9902-MA



9903 PA



9902-4

9903 Series

LED Bar Lights

Code	Mounting Type	Lense Colour	Price	Normally
9903PA	Permanent	Amber	\$445.87ea	\$495.41ea
9903PC	Permanent	Clear	\$445.87ea	\$495.41ea
9903MA	Magnetic	Amber	\$467.56ea	\$519.51ea
9903MC	Magnetic	Clear	\$467.56ea	\$519.51ea

Size: 400 (l) x 172 (w) x 37 (h) mm

9902 Series

Micro LED Bar Lights

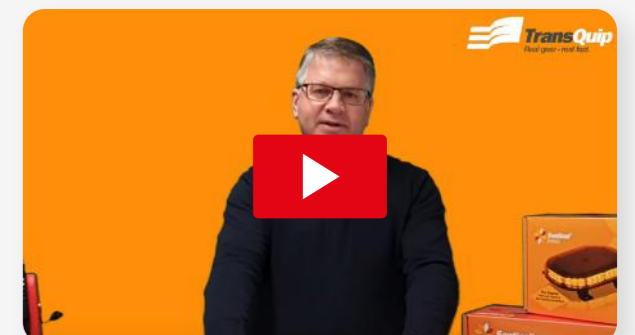
Code	Mounting Type	Lense Colour	Price	Normally
9902-1	Permanent Single Mount	Clear	\$339.61ea	\$377.34ea
9902-1A	Permanent Single Mount	Amber	\$339.61ea	\$377.34ea
9902-4	Permanent 4 Bolt Mount	Clear	\$339.61ea	\$377.34ea
9902-4A	Permanent 4 Bolt Mount	Amber	\$339.61ea	\$377.34ea
9902-M	Magnetic	Clear	\$361.42ea	\$401.57ea
9902-MA	Magnetic	Amber	\$361.42ea	\$401.57ea

Size: 248 (l) x 172 (w) x 37 (h) mm

Q&A about LED Barlights



The original #9902 and #9903 are our most popular LED Mini Barlights - Learn more about these.



SOLAR LIGHTS



Code: 9514

Round Solar Powered Road Stud, White

- White solar powered road safety stud.
- Grey aluminum body with 8 anchoring fins.
- Clear polycarbonate lens.
- 125(l) x 125(w) x 50(h) mm.
- 4mm surface protuberance.
- 900 grams.
- 119.3 degrees beam angle.
- Light activates at 101 lux and turns off 5 mins after ambient light exceeds threshold.
- 90 lumens.
- 1600mah battery.
- 8 hours to charge by solar power.
- Discharge time is 96 hours with no recharge - ie 12 rainy days.
- IP68 rating.
- Surface features includes anti-skid, scratch resistant and self-cleaning surface.
- Compression is certified at 70kN.

\$119.60ea



Code: 9518

Solar Powered Night Marker Light

- Up to 100 hours continual light from full charge
- Size: 137mmL x 33mmW x 50mmH
- Ideal for night marker lights
- 12 month warranty
- New Zealand Designed
- Safety Compliant
- Robust, durable, built to last
- Various mounting options
- Will fit to: trucks, trailers, diggers, farm machinery, mini skips and MORE!
- IP68 waterproof



\$139.72ea Normally \$174.65ea



Code: 9517

Solar Powered Night Marker Light

- 8 hours of (free) charging provides 72 hours operation.
- Size 103mm x 103mm x 25mm
- Ideal for night marker lights
- 12 month warranty
- New Zealand Designed
- Safety Compliant
- Robust, durable, built to last
- Various mounting options
- Will fit to: trucks, trailers, diggers, farm machinery, mini skips and MORE!
- IP68 waterproof



\$139.72ea Normally \$174.65ea

Q&A about Sentinel Solar Lights Video



Save wiring up hassles and draining your battery with the night marker light.



REVERSING CAMERAS & ALARMS



Code: 4483

Wireless reversing camera kit

- Wireless rear view camera kit. Ideal for where it is difficult to run a cable between the monitor and the camera.
- This kit includes a wireless 7 inch monitor with an embedded 2-4G receiver.
- One wireless camera, waterproof IP67/68. Remote control.
- Wiring loom that can be powered by 12 or 24 volt input.
- This kit can be fitted with 2 extra wired cameras.

\$850.46ea Normally \$944.95ea



Code: 4484

Reversing camera kit with 7" screen

Popular rear view camera kit to increase your safety factor.

Kit Includes:

- 7 inch colour monitor and mounting stand.
- Screen shows one view and can toggle between 2 cameras.
- Comes with one heavy duty camera with inbuilt heating to prevent condensation. (Extra cameras available)

\$433.95ea Normally \$578.60ea

Reversing alarms

- Activated when reverse gear is engaged
- Compact - easy to fit on
- Dual voltage
- Traditional and broadband sound options



Code	Decibel	Voltage	Sound	Price	Normal Price
4459	102 dB	12-48V	Broadband sound	\$136.80	\$151.99
4460	97 dB	12-80V	Broadband sound	\$123.11	\$136.78
4461	77-102dB	12-24V	Self adjusting traditional sound	\$81.81	\$90.89
4462	77-97dB	12-24V	Self adjusting broadband sound	\$105.30	\$116.99
4482	102 dB	12-80V	Traditional beeper sound	\$71.64	\$79.60
4480	97 dB	12-80V	Traditional beeper sound	\$71.64	\$79.60



Code: 4463

Reversing beeper with blue LED light

- Reversing beeper with Blue LED light
- Dual voltage 12-24V
- Wattage 25W@24V
- IP67
- 97dB
- ECE R10

\$148.90ea Normally \$165.44ea

Q&A about Reversing Cameras



A video to answer your FAQ's about reversing cameras



ALUMINIUM TRENCH SHIELD



Code: 2301-1018

Guardian aluminium trench shield 2.4m x 1.2mH with 1.0-1.8m struts

A great lightweight, small all-rounder shield for the drainlayer, contractor, plumber or anyone who needs a shield to do a small trench job. Easily handled by 2 people.

- Length (m): 2.4
- Height (m): 1.2
- Weight Per Set (kg): 150
- Stackable: Yes
- Inbuilt Lifting Points: Yes
- Max Depth (m): 3.6 or 2.4 if on end
- Rating (kPa): 20-50 depending on where the struts are located
- Wall Thickness (mm): 56
- Strut Sizes (m): 1.0 to 1.8
- Under Strut Clearance (m): 290
- Recommended Machine Size (tonne): 1
- Certificates: British and European Standards BS. EN 13331.1 and 13331.2, Australia & New Zealand Standard AS 4744.1-2000 & United States Standard, OSHA Sub Part P.



\$11,899.00 per set



Q&A about Guardian #2301 Trench Shield



Looking for a strong, lightweight, civil and drainage aluminium trench shield system that'll protect lives from trench collapse and fit on the back of a ute? Find out more!



SHIELDS & SOLDIERS



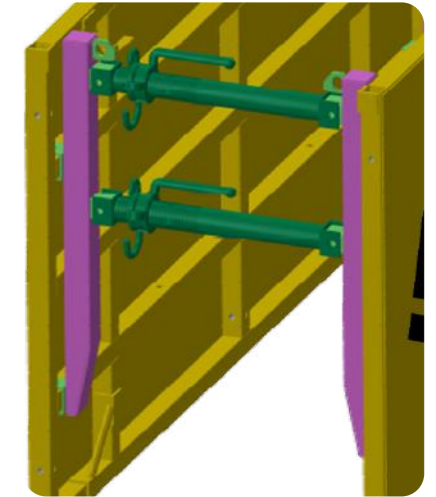
Code: 2452-0609

Guardian aluminium manual soldier set 2.4mH with 0.6-0.9m struts

Safe and lightweight, but easily handled. Great for drain layers and other small companies where a digger isn't always on site, but you need trench protection.

- Length (m): 0.2
- Height (m): 2.4
- Weight Per Set (kg): 38
- Stackable: No
- Max Depth (m): 2.4
- Rating (kPa): 20
- Wall Thickness (mm): 45
- Strut Sizes (m): 0.6 to 0.9 adjustable but other sizes available (1.0 to 1.8 and 1.5 to 2.5)
- Under Strut Clearance (m): 0.48 to 1.08
- Certificates: British and European Standards BS. EN 13331.1 and 13331.2, Australia & New Zealand Standard AS 4744.1-2000 & United States Standard, OSHA Sub Part P

\$2,699.00 per set



Code: 2304

Guardian High Clearance Set, For Standard Shields

- Rated to 20kPa
- Designed to be used with standard across struts which are supplied with the standard shields

\$2,299.00 per set



ALUMINIUM TRENCH SHIELD

Code: 2413-242424

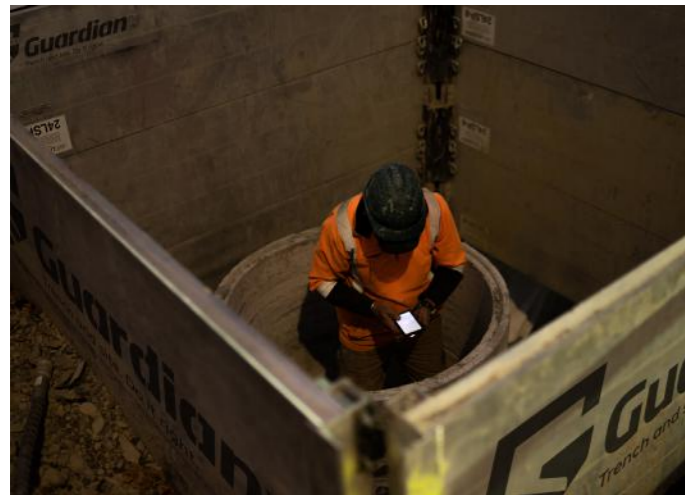
Guardian aluminium modular manhole box 2.4m x 2.4m x 2.4mH

An aluminium modular shoring system which is extremely versatile and can be configured in various ways such as a trench shield, 3-sided box or a complete closed box. This system can be easily assembled, dismantled and transported on a ute or a small trailer as the panels are lightweight and easy to handle.

Assembly is quick and easy by using gravity-activated pins, with no clips required. The wall thickness is only 50mm, minimising excavation, backfilling and restoration costs. The screw thread of spreader bars is shallow and coarse for easy cleaning and performance. Extra components are available such as corner brackets, lifting eyes, struts and legs. Other panel sizes are also available.

This configuration is for a 2.4m x 2.4m box at 2.4m high.

- Length (m): 2.4 by 2.4
- Height (m): 2.4
- Weight Per Box (kg): 940
- Stackable: Yes
- Inbuilt Lifting Points: No
- Max Depth (m): 5.4
- Rating (kPa): 44
- Wall Thickness (mm): 50
- Recommended Machine Size (tonne): 5.5
- Certificates: OSHA standard 29 CRF, Part 1926, Subpart P, Excavations



Q&A about Guardian Modular Shields



Check out this video made to answer all the common questions about modular trench shields



STEEL PLATES & GROUND MATS

Steel Plates

Ideal for covering small trenches or driveways to provide light vehicle access. Equipped with holes for lifting with chain kits.

Code: 2500

- Steel plate 2.4 metres long x 1.2 metres wide x 12mm thick.
- Weighs 250kg approx.

Code: 2501

- Steel plate 2.4 metres long x 1.2m wide x 25mm thick
- Weighs 600kg approx.

Code: 2502

- Steel plate 2.4 metres long x 1.5 metres wide x 25mm thick.
- Weighs 750kg approx.



Code: 2808B

Ground Mats

Ground protection mats for supporting heavy vehicles and machinery on soft or sensitive ground. Traction surface on one side.

- Dimension - 2440mm x 1220mm, 39 kg.
- Less downtime & delays = faster project completion
- Eliminate cost of remediation
- Less project management time and delay on future work
- Improved on-site health & safety



Q&A about Ground Mat



Video to answer your most common ground mat questions



TRAFFIC LIGHTS

Code: 9570

TransQuip Portable Traffic Light

TransQuip Portable Traffic Lights. Set of 2 traffic lights in a portable barrow design for easy transport and use. Meets NZTA standards.

Includes: 1 x Remote, 2 x Batteries, Visors, Target Boards, 2 x Solar Panels

\$18,990.00 per pair

Enhanced Security:

- Traffic lights connected via radio link
- Alerts displayed on remote control
- High-visibility LEDs
- Secure battery compartment
- Enhanced security & proven strength
- Telescopic mast with restraint system

Easy to Use:

- Long-range universal remote control
- System that can have up to 4 traffic lights
- Simple fast set up
- Easy Programming

Optimised Storage:

- Foldable light-head
- Stacking lights
- Space saving on vehicles
- Prevents damage in transit
- Light body interlocks

Ergonomic:

- Two transportation modes wheelbarrow/dolly mode
- Secure system for unfolding/folding the light-head
- Retractable carrying arms
- Transportation handles
- Fully protected when folded
- Folding signboard

Proven Strength:

- Steel telescopic lifting system stainless steel carrying arms
- High-density rotationally moulded polyethylene frame
- Highly shock-resistant ABS light-head
- Optics protected by polycarbonate plate
- Puncture-proof front and rear wheels



Code: 9574

Guardian Easy Carry Tow Hitch Platform

- Black powder coated finish
- Constructed out of steel
- 1180mm long x 710mm wide
- Ramp is 1520mm long x 680mm wide
- Load capacity of 220kg
- Hitch size required of 50mm x 50mm
- 2 reflectors included
- Multiple tie down points
- Includes an extra long 1500mm long ramp when fully extended
- Low pitch ramp allows for easy loading and unloading
- If required, the entire carrier can be tilted upward and locked in the upright position
- Quick release spring loaded pins allow for easy unlocking and locking of the ramp
- For easy lifting of the carrier there are large cut out handles with rubber inserts

\$1,895.60ea



ROAD CONES AND BARRIERS



Code: 9178

Extendable reflective barrier arm, 1.2m - 2.1m

- Extendable reflective barrier arm for mounting onto cones.
- From 1200mm to 2100mm long

\$7.21ea for 30+ or \$9.00ea



Code: 9174

Narrow (S-line) 900mm cone, 2 reflective collar, NZ Made

- Each cone weighs 4.5kgs unballasted
- Grip on top for easy handling
- AS/NZS 1906, 1:2007 compliant
- Large studded base for extra stability
- Dual reflective band
- Manufactured from UV stable materials
- Contains no regrind materials
- Corporate branding options available

\$34.40ea for 50+ or \$38.99ea



Code: 9169-22

Construction Fence Barrier With Netting, 2.2x1.25m, With Feet

- 2.2m wide x 1.25m high.
- Frame is constructed out of 25mm OD x 2.0mm wall.
- Infill is high vis orange 30mm x 30mm diamond mesh netting.
- Each fence weighs 20kg including the feet.
- High galvanizing for extra outdoor durability.
- Removable feet are 600mm x 60mm x 8mm.

\$169.00ea



Code: 9176

Collapsible Cone, 900mm with 2 reflective collars and a Light

- 900mm high Port-A-Cone which can be collapsed into a small flat carry bag.
- 2 reflective strips.
- Internal LED light powered by AAA batteries.

\$112.27ea



Code: 9169-11

Construction Fence Barrier With Netting, 1.1x1.25m, With Feet

- 1.1m wide x 1.25m high.
- Frame is constructed out of 25mm OD x 1.8mm wall.
- Infill is high vis orange 30mm x 30mm diamond mesh netting.
- Each fence weighs 10kg including the feet.
- High galvanizing for extra outdoor durability.
- Removable feet are 600mm x 60mm x 8mm.

\$119.00ea



Code: 9325

No stopping cone sleeve, 10pk

- No stopping cone sleeve, 10pk

\$59.40 per pack of 10

REFLECTIVE TAPE, DG SIGNS & LIGHTING



Reflective tape with wide angle reflective performance, solvent and impact resistant.

- Cut to any full meter length required.
- 9260, 9261 and 9262 roll is 50m.
- 9263, 9266 roll is 45.7m
- 9266 is DOT-C2
- Price is per metre

\$11.07ea Normally \$12.30ea



Code: 9260 Yellow Code: 9261 White Code: 9262 Red Code: 9263 Yellow/Green Code: 9266 Red/White



Code: 9502 Amber

LED flashing beacon

- 94mm Round x 43mm High
- Smart LED light with steady burn or flashing option.
- Ideal for attaching to Overdimension loads
- Tough - made to take the knocks.
- Power Source - 4 x AA batteries (supplied separately)
- Dangerous when wet
- LED Marker beacon with magnetic base.

\$42.55ea Normally \$47.27ea



Code: 9503 Red



Code: 9331-SS

\$179.62ea

Dangerous Goods Flip Sign 15 Messages

Size: 350mm x 350mm

Messages for both codes:

- Drive safely (9331-TQ) or stay safe on NZ roads (9331-SS)
- Spontaneously combustible
- Oxidizing agent
- Miscellaneous dangerous goods
- Flammable liquid
- Toxic gas
- Flammable gas
- Dangerous goods
- Toxic
- Organic peroxide
- Flammable solid
- Explosive
- Corrosive
- Non-flammable non-toxic gas
- Dangerous when wet.



Code: 9331-TQ

\$165.80ea



Code: 9332

Dangerous goods sign holder

- Dangerous Goods sign holder to fit 295 x 295mm signs.
- Size - 300mm x 300mm

\$31.89ea Normally \$35.43ea



Code: 9230

Standard red LED wand 535mm

- 535mm long hand held wand with solid or flashing light.
- Powered by "D" batteries (not included).

\$44.78ea Normally \$49.75ea



Code: 9231

Short LED wand 300mm

- 300mm long hand held wand with solid or flashing light, with horn and a magnetic end.
- Powered by "AA" batteries (not included).

\$57.19ea Normally \$63.54ea

ESSENTIALS



Code: 5329

Grease Cartridge, Multipurpose, 450g, (box has 20 cartridges)

- Lithium Complex EP2 Grease
- Sold as individual cartridges.
- Lube shuttle spin-on grease cartridge
- 400g spin-on grease cartridges for fast and easy reloading with no priming required

\$11.95ea for 40+ or \$12.32ea



Code: 3505

TransQuip Fire Stryker Fire Extinguisher, 365g, Class ABCEF, Non-Pressurised

- Metal tube with plastic handle.
- 365 grams.
- 100 seconds (1.6 mins) fight time.
- Easy to use.
- Environmentally friendly.
- No servicing required.
- Up to 8 years shelf life from date of manufacture.
- Leaves no powder residue.
- Not pressurized.
- Can be safely stored.

\$220.00ea



Code: 3596

760mm x 9mm black cable tie, 50pk

- UV rated cable tie. Packaged in lots of 50.
- Dimension - 760mm x 9mm
- Other sizes available.

\$85.19ea



Code: 7606

Tiedown

- Tiedown strap and ratchet.
- 2500kg
- 9m x 50mm
- Heavy duty ratchet and hook & keeper ends.
- 50mm wide tiedown.

\$25.93ea for 5+ or \$29.73ea



Code: 5307

Lever action grease gun 8000 PSI

- Economy lever type grease gun with rigid extension.
- Pumps up to 8000psi, takes standard 450 gram cartridges or can be bulk filled.

\$45.72ea



Code: 5308

Deluxe lever action grease gun 12000 PSI

- Top quality lever action grease gun for the serious user who needs reliability.
- Plenty of grunt, pumps up to 12,000psi.
- Takes a standard 450 gram cartridge or has a bulk fill nipple.
- Coarse thread on barrel to minimise cross threading.

\$135.54ea Normally \$150.60ea

ELECTRICAL & LIGHTING



NEW PRODUCT

Code: 4292

Combination Tail Light, With Stop, Park, Reverse, Reflector & Progressive Indicator, 10-30V

- Polycarbonate housing and transparent lens.
- 283mm long x 100mm wide x 29mm thick with 0.5m long cable.
- Moving indicator light.
- 10-30 volts.
- Two M6 bolts fixed into back for mounting with hole centre of 116mm.
- IP67 rated.
- ECE R148, R150.
- EMC R10.

\$119.60ea



Code: 4289

Combo LED 9-33V Stop/Tail/Indicator/Reflector Reverse

- Fully compliant LED rear lighting solution for stop, rear position, direction indicator, reverse and reflector functions
- Constructed with a polycarbonate lens and heavy duty smart clip base with multiple mounting points
- Designed for high reliability and performance
- Well suited to OEM and commercial vehicle applications
- Highly styled optical design

\$145.28ea Normally \$181.60ea



Code: 4730FM

Round LED worklight magnetic mount flood beam

- Popular round 18 watt, 1300 lumens LED worklight, ideal for multiple applications.
- Multivolt for 12 and 24 volt use.
- Very low current draw - save your batteries.
- Tough alloy housing, and stainless steel swivel mounting bracket.
- Head size is 115mm diameter.
- Magnetic model has a magnetic base and 9 metre long lead with a cigarette lighter plug for quick installation.
- Flood beam.
- Waterproof IP67.
- Radio interference free.

\$90.79ea Normally \$121.05ea



Code: 4378

Slim Headlight, Flood/Spot Beam, 650lm

- Flood and spot light beam pattern
- 450 lumens for flood light
- 200 lumens for spot light
- Turbo mode 650 lumens (maximum light)
- Rechargeable 3.7 volt, 1200mAh lithium-ion battery
- Run time up to 8 hours
- Charging time 2.5 hours approximately
- IPX4 rating
- Colour temperature 5700k
- Low battery alert light
- USB-C charging cord supplied

\$103.50ea Normally \$115.00ea



Code: 4382

USB rechargeable LED head light 400lm

- USB rechargeable sensor LED head light
- Built in rechargeable battery
- 400 lumens
- Discharging time: Up to 4 hours
- IP65 rating
- Charging time: 4 hours

\$54.00ea Normally \$60.00ea



Code: 4637F

LED Worklight, sq, 1900lm, flood 10-70V, IP68

- Heavy duty, radio interference free LED worklight.
- Top quality option in 1900 lumen options.
- Extra heavy alloy housing, polycarbonate lens, big voltage range of 10-70 VDC.
- Wide mounting base for extra strength and stainless steel swivel bracket.

\$116.64ea Normally \$129.60ea

SPEED BUMPS & PARKING KERBS



Code: 9535

Speed hump 1.83m long

- Speed hump to slow traffic down
- End caps to fit on ends.
- High density rubber compound with high head lighty reflective tape strips and inbuilt cats eyes reflector beads.
- Dimension: 1830(L) x 300(w) x 50(h) mm

\$182.80ea Normally \$203.11ea



Code: 9536

Parking kerb 1.65m long

- Parking kerb to make your car park safer and protect your property from cars overshooting the mark
- Fixing pins available for asphalt or concrete
- Dimension: 1650(L) x 155(w) x 100(h)

\$106.35ea



Code: 4378

Slim Headlight, Flood/Spot Beam, 650lm

- Flood and spot light beam pattern
- 450 lumens for flood light
- 200 lumens for spot light
- Turbo mode 650 lumens (maximum light)
- Rechargeable 3.7 volt, 1200mAh lithium-ion battery
- Run time up to 8 hours
- Charging time 2.5 hours approximately
- IPX4 rating
- Colour temperature 5700k
- Low battery alert light
- USB-C charging cord supplied

\$103.50ea Normally \$115.00ea



Code: 4382

USB rechargeable LED head light 400lm

- USB rechargeable sensor LED head light
- Built in rechargeable battery
- 400 lumens
- Discharging time: Up to 4 hours
- IP65 rating
- Charging time: 4 hours

\$54.00ea Normally \$60.00ea



Code: 4637F

LED Worklight, sq, 1900lm, flood 10-70V, IP68

- Heavy duty, radio interference free LED worklight.
- Top quality option in 1900 lumen options.
- Extra heavy alloy housing, polycarbonate lens, big voltage range of 10-70 VDC.
- Wide mounting base for extra strength and stainless steel swivel bracket.

\$116.64ea Normally \$129.60ea



Code: 9538

Dyna bolt for parking kerb

\$4.85ea



Code: 9534

Speed hump end for 9535

\$37.26ea Normally \$41.39ea



Code: 9537

Asphalt spike for fixing parking kerb & speed humps

- Asphalt spike for fixing parking kerb or speed hump into asphalt.
- Size: 305mm long and 15mm thick.

\$6.51ea

Q&A about Parking Kerbs



New video to learn more about parking kerbs & what one is the right one for you. Check out the video & blog.



5N 1 JACKET & WHEEL CHOCKS



Code: 9473

5n1 jacket/vest combo Orange TTMC

- The ultimate 5 in 1 jacket & vest combo.
- Up to TTMC-W17 standard.
- Inner vest - day/night vest without sleeves.
- Inner vest with sleeves - add zip on/off sleeves to combat the cold.
- Outer jacket - waterproof outer jacket, packed with innovative features, including a concealed, fully lined hood.
- Outer jacket + inner vest - add more warmth to your jacket with the fleece liner.
- Outer jacket + inner vest with sleeves - the ultimate protection. Wet and cold barrier.
- Sizes from S to 8XL

\$248.69ea

Code: 3726

Wheel chock holder, holds 2 x small chocks or 1 x large chock

- Wheel chock holder made out of 3mm zinc-plated steel for longevity and strength
- Can hold either 2 x 3709 small wheel chocks or 1 x 3708 large wheel chock
- Fixable by 4 x screws or bolts
- A hole on each side to hook a bungy cord to for easy securing of load.
- Wheel chocks purchased separately.

\$63.81ea Normally \$70.89ea

Code: 3708

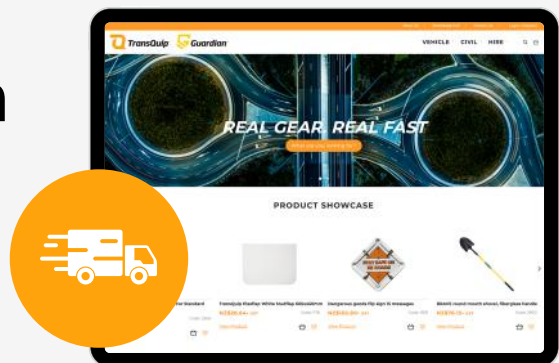
Large rubber wheel chock, pair

- Large rubber wheel chock, sold in pairs.
- High density rubber.
- Your own risk assessment must be carried out before using this product.
- Dimension - 360mm long x 290mm wide x 265mm high. 10.5kg each.

\$104.44ea Normally \$130.55ea

FREE! shipping when you order online.

MARCH 2024 ONLY. To NZ urban addresses only.



Supply New Zealand Wide

Christchurch
2 Edmonton Road,
Hornby, Christchurch

Auckland
6a Te Apunga Place,
Mount Wellington, Auckland



Freephone: 0508 31 31 31
transquip.co.nz



Freephone: 0508 41 41 41
guardiancivil.co.nz