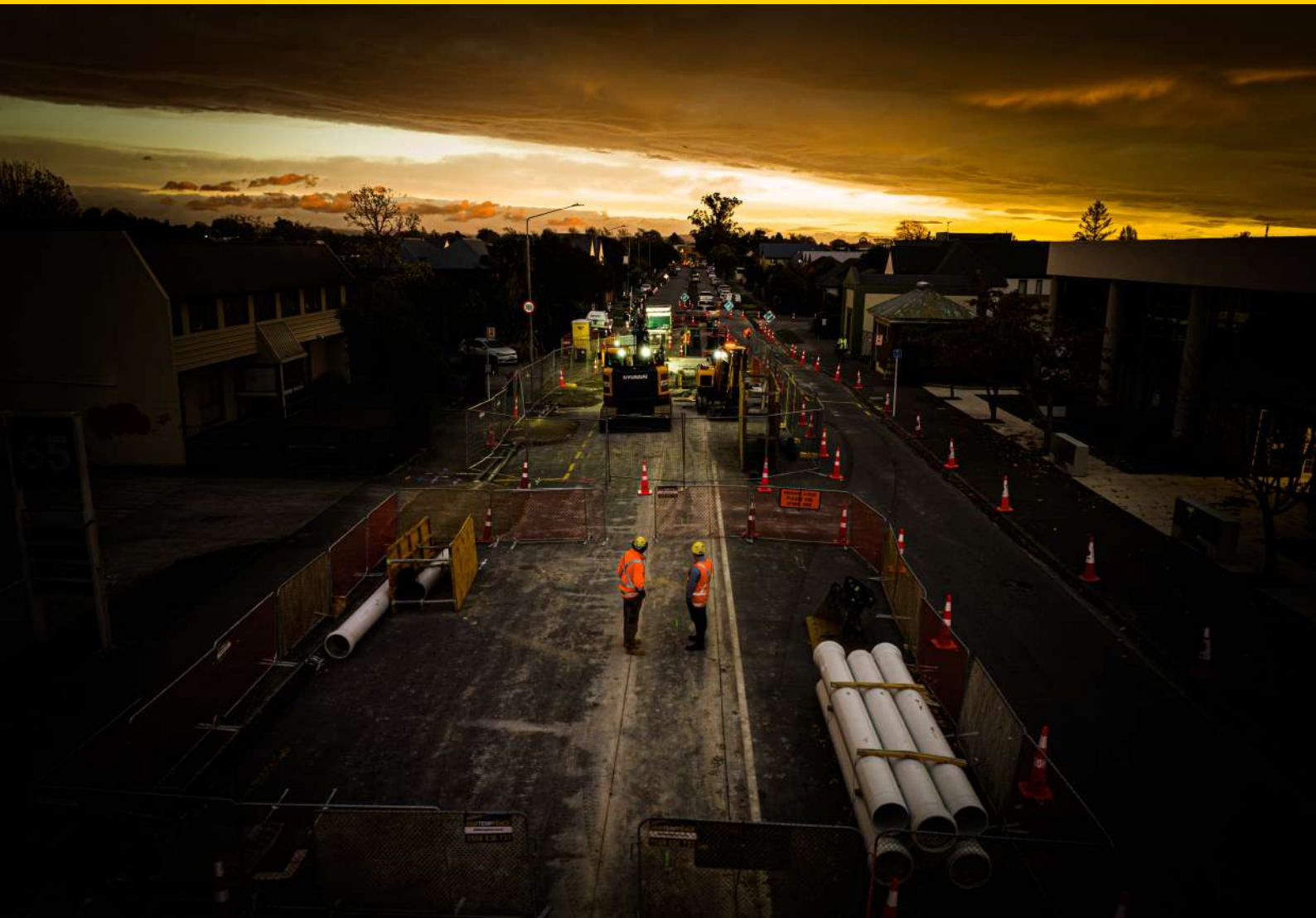


# TRENCH AND SITE. DO IT RIGHT.

Guardian Civil Hire is your civil project partner providing the safety equipment to keep your job compliant.





## OUR VALUES

**Care:** We are committed to understanding other peoples' needs, to continually improving, and to generously sharing knowledge so everyone prospers.

**Integrity:** We have strong ethics, are transparent in our dealings and represent ourselves and our products truthfully.

**Teamwork:** We work together to benefit all stakeholders. Collectively, our talents, skills, and industry awareness provide an advantage in both solutions and service.

**Continuous Improvement:** We strive to improve people, systems, environments and products and are committed to a culture that always goes the two extra miles.



**100% LOCALLY OWNED**



**PRODUCTS PROVEN IN NEW ZEALAND AND FULLY COMPLIANT.**



**THE PREFERRED SYSTEM FOR MANY CIVIL CONTRACTORS**



**PERSONAL RESPONSE WITHIN AN HOUR**  
Monday-Friday 7:00am to 5:00pm



# CONTENTS

**P.4**



**MANUAL SOLDIER SETS**

**P.5**



**HYDRAULIC VERTICAL SHORES**

**P.6**



**STANDARD TRENCH SHIELDS**

**P.8**



**LARGE TRENCH SHIELDS**

**P.10**



**MODULAR TRENCH SHORING SYSTEM**

**P.12**



**MANHOLE BOXES**

**P.14**



**LADDER PLATFORMS/  
LADDERS**

**P.15**



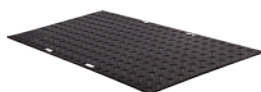
**DAVIT ARMS/WINCHES**

**P.16**



**HANDRAILS**

**P.17**



**GROUND MATS**

**P.18**



**ROAD PLATES &  
TRENCH COVERS**

**P.19**



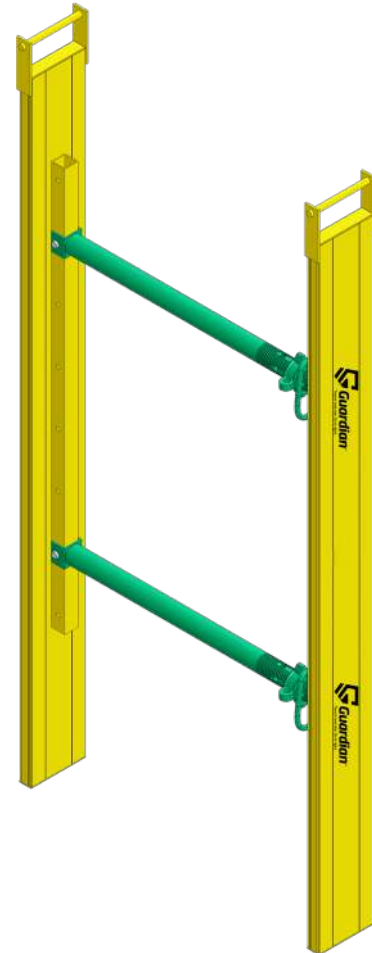
**SHIELDS IN ACTION**

# MANUAL SOLDIER SETS

Safe and lightweight, but easily handled. Great for drainlayers and other small companies where a digger isn't always on site, but you need trench protection.

Especially ideal for working in tight situations, spot bracing and around services.

- Stackable: No
- Max Depth (m): Length of plank - 1.8m, 2.4m or 3.0m
- Rating (kPa): 20
- Under Strut Clearance: 0.48m to 1.08m
- Certificates: British and European Standards BS. EN 13331.1 and 13331.2, Australia & New Zealand Standard AS 4744.1-2000 & United States Standard, OSHA Sub Part P
- 8 times stronger than F17 hard wood
- The shield internal width is determined by the size of the struts. The struts are measured from the 'internal' mount which is also the internal width of the shield itself. For example, using the #2305-S struts gives you an internal measurement of between 0.6m to 0.9m.



## Soldiers

Code	Panel Length	Panel Width	Panel Weight	Panel Thickness
2451	1.8m	0.2m	10kg	45mm
2452	2.4m	0.2m	13kg	45mm
2453	3.0m	0.2m	15kg	45mm



Check out our video demonstrations here:  
[www.transquip.co.nz](http://www.transquip.co.nz)

## Accessories



2303

### Hardened pin and R clip

85mm x 12mm



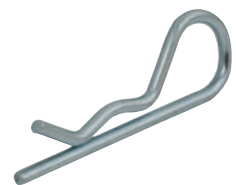
### Acrow adjustable strut

2305-S 0.6m to 0.9m  
 2305-M 1.0m to 1.8m  
 2305-L 1.5m to 2.5m



2312

### G hoop pin for Acrow struts



3558

### Zinc plated 'R' clip

4mm

# HYDRAULIC VERTICAL SHORES

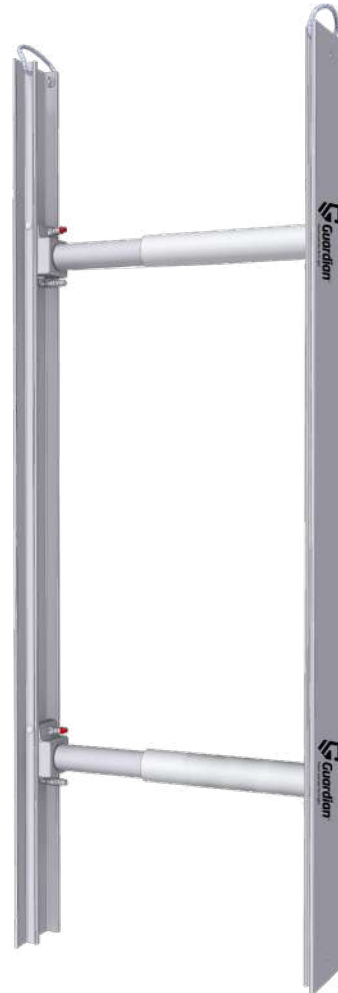
Great for working around services. These provide trench protection by shoring the ground to create positive ground pressure. This is achieved with hydraulic pressure supplied by the hand pump, using a special water based hydraulic fluid.

Over sleeve protects the cylinder and security bleed prevents over-extension

- Fitted with handles for easy installation
- Mechanical locking device
- Pump uses biodegradable fluid
- Under Strut Clearance: 0.56m
- Certificates: OSHA Sub Part P

## Soldiers

Code	Panel Length	Panel Width	Panel Weight
2457	2.4m	0.2m	10kg



Check out our video demonstrations here:  
[www.transquip.co.nz](http://www.transquip.co.nz)

## Accessories



### Extension sleeve

2460-S	0.58m to 0.92m
2460-M	0.85m to 1.18m
2460-L	1.13m to 1.45m



2459

### Pump for pressurising hydraulic soldier sets

20L



2458

### Biogradable hydraulic fluid concentrate

235ml



# STANDARD TRENCH SHIELDS

A great lightweight, small all-rounder shield for the drainlayer, contractor, plumber or anyone who needs a shield to do a small trench job. Single panels are easily handled by 2 people.

- Stackable: Yes – 3 sets high
- Inbuilt Lifting Points: Yes
- Max Depth (m): 3.6 or 2.4 if on end
- Rating (kPa): 20 – 50KPa
- Under Strut Clearance: 0.3m
- Recommended Machine Size (tonne): 1.6 minimum
- Certificates: British and European Standards BS. EN 13331.1 and 13331.2, Australia & New Zealand Standard AS 4744.1-2000 & United States Standard, OSHA Sub Part P
- The shield internal width is determined by the size of the struts. The struts are measured from the 'internal' mount which is also the internal width of the shield itself. For example, using the #2305-S struts gives you an internal measurement of between 0.6m to 0.9m.

Code	Panel Length	Panel Height	Panel Weight	Panel Thickness
2301	2.4m	1.2m	55kg	56mm



Check out our video demonstrations here:  
[www.transquip.co.nz/Blogs](http://www.transquip.co.nz/Blogs)



Watch the video make to answer common FAQ's about these:  
[www.transquip.co.nz/Blogs](http://www.transquip.co.nz/Blogs)



# STANDARD TRENCH SHIELD ACCESSORIES



**2303**  
**Hardened pin and R clip**

85mm x 12mm

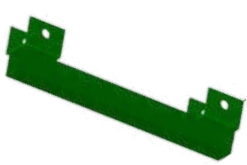


**Acrow adjustable strut**

- 2305-S 0.6m to 0.9m
- 2305-M 1.0m to 1.8m
- 2305-L 1.5m to 2.5m

**2306**  
**Leg**

600mm



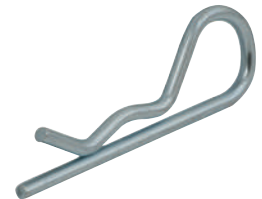
**2307**  
**Vertical extension joiner**



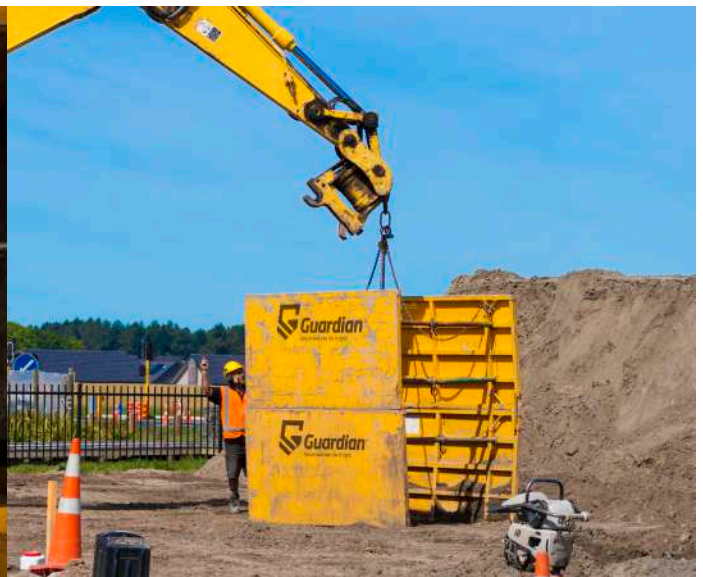
**2309**  
**Manhole corner bracket**



**2312**  
**G hoop pin for Acrow struts**



**3558**  
**Zinc plated 'R' clip**  
4mm



For safety accessories like handrails and davit arms, go to page 14-16 to see our range!

# LARGE TRENCH SHIELDS

Double skin, great contractor shield. Designed for use in subdivisions in all types of trenches. Ideal for longer pipe laying trenches. Simple to use and most sizes can be stacked for deeper trenches. Can be used in different configurations such as a box. Can be made to different sizes to suit your application

- Lightweight aluminium – save your money by using lighter excavation equipment
- These can be manufactured up to super long 10m trench shields
- Cutting edges on bottom edge
- Stackable: Yes
- Lifting Points: Inbuilt
- Certificates: British and European Standards BS. EN 13331.1 and 13331.2, Australia & New Zealand Standard AS 4744.1-2000 & United States Standard, OSHA Sub Part P
- The shield internal width is determined by the size of the struts. The measurements of the struts are also the internal width of the shield itself. For example, using the #2333 struts gives you an internal measurement of 0.8m.



Code	Panel Length	Panel Height	Approx Full Set Weight	Under Strut Clearance	Panel Thickness	Rating
<b>2375</b>	3.6m	2.4m	1000kg	1.35m	90mm	43kPa
<b>2376</b>	3.6m	1.05m	540kg	0.47m	90mm	43kPa
<b>2395</b>	5.0m	2.4m	1700kg	1.35m	150mm	55kPa
<b>2396</b>	5.0m	1.5m	1200kg	0.55m	150mm	55kPa
<b>2398</b>	7.2m	2.4m	2200kg	1.35m	150mm	36kPa
<b>2399</b>	7.2m	1.5m	1800kg	0.55m	150mm	36kPa



Check out our video demonstrations here:  
[www.transquip.co.nz/Blogs](http://www.transquip.co.nz/Blogs)



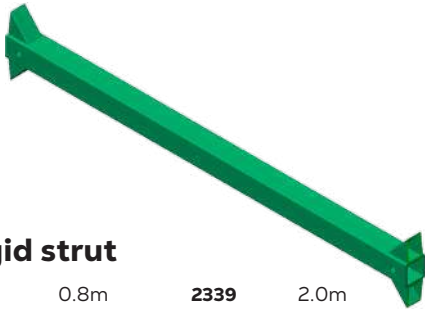
Watch the video make to answer common FAQ's about these:  
[www.transquip.co.nz/Blogs](http://www.transquip.co.nz/Blogs)







# LARGE TRENCH SHIELDS ACCESSORIES



## Rigid strut

<b>2333</b>	0.8m	<b>2339</b>	2.0m
<b>2334</b>	1.0m	<b>2340</b>	2.4m
<b>2335</b>	1.2m	<b>2341</b>	3.0m
<b>2337</b>	1.5m	<b>2347</b>	3.5m
<b>2338</b>	1.8m		



## Adjustable strut

<b>2342 - S</b>	0.8m to 1.2m
<b>2342 - M</b>	1.2m to 2.0m
<b>2342 - L</b>	1.4m to 2.4m



**2344**

## Manhole corner bracket



**2345**

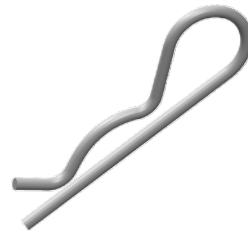
## Vertical extension joiner



**2346**

## Hardened pin and R clip

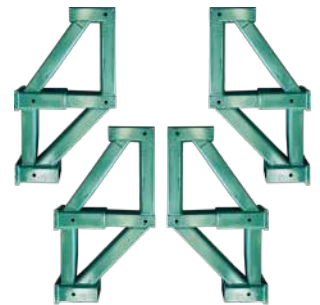
185mm x 20mm



**3559**

## Zinc plated 'R' clip

5mm



**2379**

## High rise strut 4 post set - struts additional



For safety accessories like handrails and davit arms, go to page 14-16 to see our range!



# MODULAR TRENCH SHORING SYSTEM

- Tongue and groove panels are easily aligned leaving a smooth one piece looking panel
- Can be easily transported in a ute or small trailer as they are lightweight
- Assembly is simple and quick with a smart system, using gravity activated pins. It has fewer parts to lose with no R clips needed to secure the pins
- The wall thickness is only 50mm - minimising excavation, backfilling and restoration costs
- Screw thread spreader bars have a shallow thread for easy cleaning and performance
- Stackable: Yes
- Lifting Points: Attachable to each top corner
- Certificates: OSHA Sub Part P
- The “tongue” of the tongue and groove design is not designed for cutting into the ground. These are best used in a fully dug excavation. This is as opposed to partially digging the excavation then placing the shield and continuing digging and pushing the shield down.

Code	Panel Length	Panel Height	Panel Weight	Panel Thickness	Rating
2411	1.52m	0.6m	34.02kg	50mm	74kPa
2412	1.83m	0.6m	39.01kg	50mm	57kPa
2413	2.44m	0.6m	51.71kg	50mm	44kPa
2414	3.0m	0.6m	63.50kg	50mm	26kPa



Check out our video demonstrations here:  
[www.transquip.co.nz/Blogs](http://www.transquip.co.nz/Blogs)



Watch the video make to answer common FAQ's about these:  
[www.transquip.co.nz/Blogs](http://www.transquip.co.nz/Blogs)



# MODULAR TRENCH SHORING SYSTEM ACCESSORIES

## Screw-in jack strut

- 2420 0.61m to 0.81m
- 2421 0.81m to 1.22m
- 2422 1.01m to 1.62m
- 2423 1.29m to 2.18m
- 2424 2.05m to 2.93m



2440  
**Lifting eye for modular panel**



2441  
**Modular panel manhole corner connector**



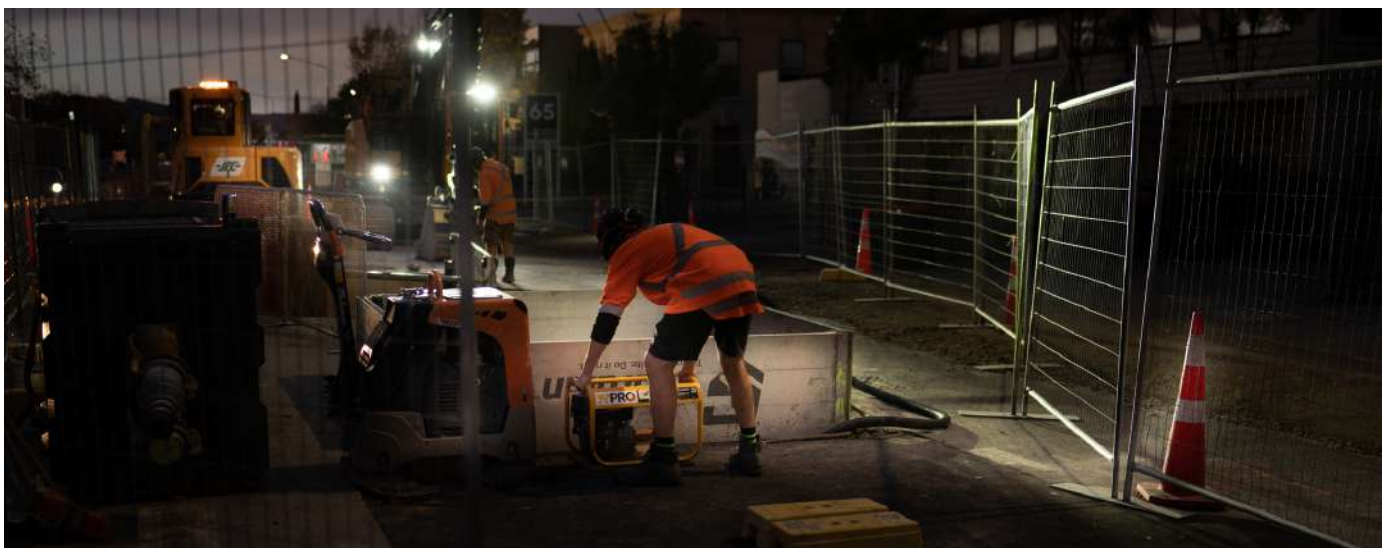
2442  
**Modular panel shield connector**



2443  
**Pin for modular panel**



2444  
**Modular panel leg**  
600mm



For safety accessories like handrails and davit arms, go to page 14-16 to see our range!

# MANHOLE BOX

- Ideal for Manholes, pits & pump stations
- Separates in two units, making it easy to transport
- Easy to handle
- Stackable: Yes - up to 3 boxes high
- Lifting Points: Inbuilt
- Certificates: British and European Standards BS. EN 13331.1 and 13331.2, Australia & New Zealand Standard AS 4744.1-2000 & United States Standard, OSHA Sub Part P
- The 2m box #2407 has a different strut configuration and is limited to 2 strut sizes (0.8m and 1.0m)
- The total width of the manhole boxes and the opening is determined by the size of the struts. For all these manhole boxes, the struts go 100mm into each side. On the 2.0m #2407 manhole box #2407, the sides are 0.6m wide. On the 2.4m #2408 and the 3.0m #2409 manhole boxes, the sides are 0.7m wide. For example, using 1.0m struts on the 2.0m #2407 manhole box gives us a total width of 2.0m and an opening of 0.8m. On the 2.4m #2408 manhole box, using 1.0m struts would give us a total width of 2.2m and an opening of 0.8m.



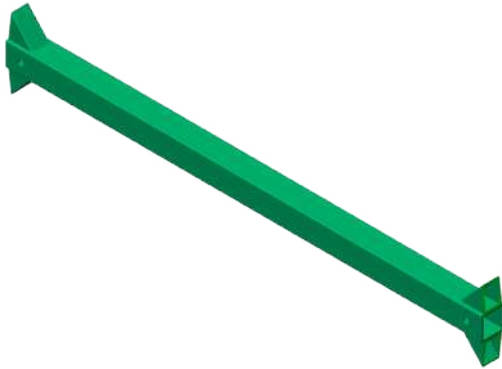
Code	Panel Length/Width	Panel Height	Approx Full Set Weight	Under Strut Clearance	Panel Thickness	Rating
<b>2407</b>	2.0m	2.0m	400kg	0.56m	56mm	30kPa
<b>2408</b>	2.4m	2.4m	1000kg	1.15m	90mm	90kPa
<b>2409</b>	3.0m	2.4m	1155kg	1.15m	90mm	60kPa



# MANHOLE BOX ACCESSORIES

## Rigid strut

- 2333** 0.8m
- 2334** 1.0m
- 2335** 1.2m
- 2337** 1.5m
- 2338** 1.8m
- 2339** 2.0m
- 2340** 2.4m
- 2341** 3.0m
- 2347** 3.5m



## Adjustable strut

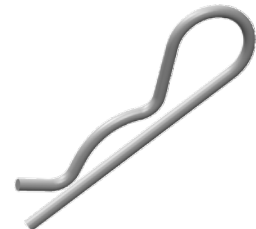
- 2342 - S** 0.8m to 1.2m
- 2342 - M** 1.2m to 2.0m
- 2342 - L** 1.4m to 2.4m



**2405**  
**Vertical extension joiner**



**2346**  
**Hardened pin and R clip**  
185mm x 20mm



**3559**  
**Zinc plated 'R' clip**  
5mm





# LADDER PLATFORMS/LADDERS



2351-L

## Ladder Mount/Platform Only

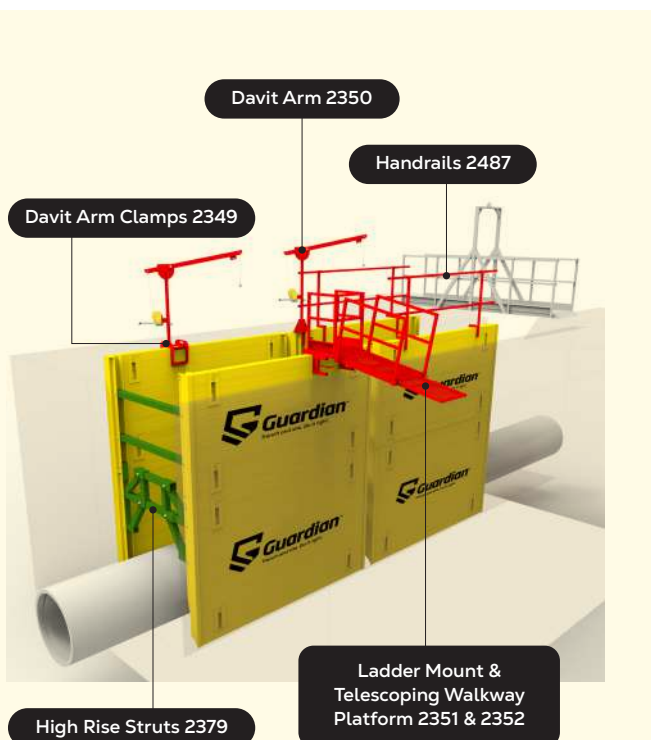
- A platform with ladder mount for safe exit/entry into a trench shield via a ladder
- Clamps to hold ladder securely to platform
- A walkway can be attached to platform to provide safe access from beyond edge of trench to ladder (purchased separately)
- 2 gate arms to block access when not in use
- Predominantly made out of alloy for easy transport and handling
- Designed to meet AS: 1657.2013
- Fits shields with panel thickness from 50mm to 180mm
- This is the platform only - see #2352 for walkway



2352-S

## Telescoping Walkway (for Ladder Mount & Walkway Platform)

- Alloy walkway, designed to attach to the 2351 ladder platform to provide safe access to ladder
- Telescopic with a length from 1.2m to 2.0m
- Predominantly constructed out of alloy for easy transport and handling
- Designed to meet AS: 1657.2013
- This is the walkway only - see #2351 for platform



2540

## Extension Ladder

- For use with ladder mount & walkway platform
- Extension ladder from 4.1m to 7.2m long, perfect for those big shield jobs
- Extended by use of a rope and pulley system

# DAVIT ARMS/WINCHES



2349

## Davit Arm Clamps

- Large Davit arm clamp for shield panels 90mm to 150mm
- Small Davit arm clamp for shield panels 60mm



2356

## Davit Bracket For Winch

- Bracket for mounting winch onto davit arm



2357

## Fall Arrest Recovery Winch Galvanized Steel Cable

- Cable is 15m long x 5mm thick galvanized steel
- Weighs 10.40kg
- Maximum recommended user weight is 150kg
- Conforms to BS EN 360
- Head size is 135mm x 110mm
- Waterproof IP67.

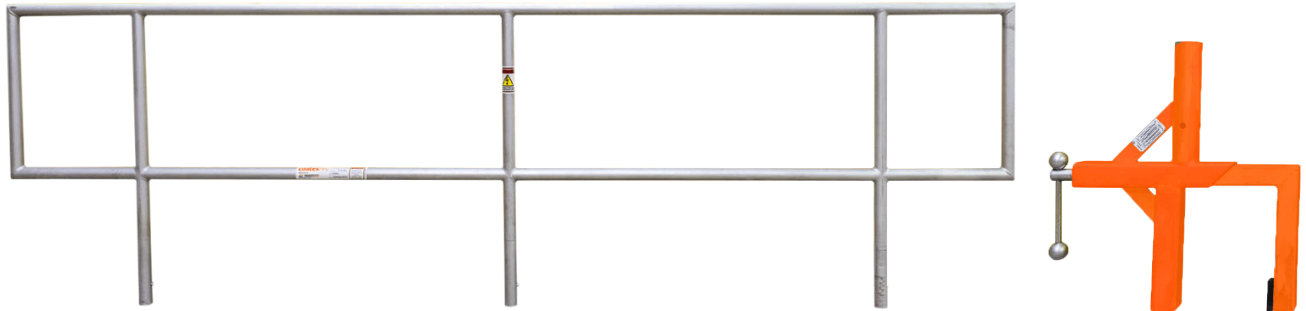


2350

## Davit Arm

- Davit arms, to be used on the aluminium shield series
- Ideal for lowering and lifting up equipment when working with shields.
- Clamps onto the shield panel itself, giving you maximum reach and working area.
- Clamp and winch not included.
- 2 sizes of clamps available, which are separate

# HANDRAILS



Individual trench shield handrail which comes with feet to suit 50–200mm wide panels. Keep your workers safe when working around and in open trench excavations, using these physical barriers on your trench shields!

- Constructed out of T6061 aluminum for strength and easy to transport
- Handrail with adjustable feet to clamp on trench shield panels from 50mm to 200mm thick
- Hired as an individual handrail
- Rubber padding on feet to ensure secure and even clamping
- Handrails click into feet with 1 pin per foot, for easy install and removal
- Complies with AS4994 and AS1657

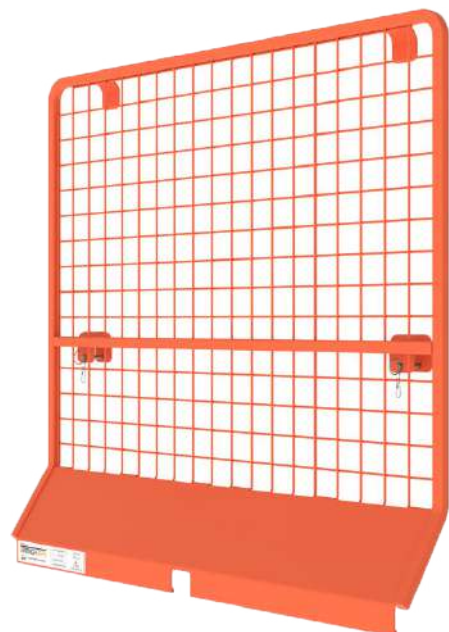
Code	Size
<b>2487-2</b>	2m
<b>2487-3</b>	3m
<b>2487-4</b>	4m

2488

## 1.0m Mesh Barrier

Individual 1.0m mesh barrier to suit #2487 handrails. Increase the safety factor with these mesh barriers on the handrails - help prevent objects from being dropped between the rails onto people working below.

- Constructed out of steel for strength and robustness
- Durable finish
- Each panel is 1.0m x 1.0m and weighs approximately 9kg
- Hired individually
- Installs onto the #2487 handrails by first hooking onto the top rail with the 2 hooks on the mesh barrier, then securing the mesh barrier to the bottom rail with the 2 steel securing pins
- Wide and slanted kick plate at bottom to provide edge protection
- Complies with requirements of AS/NZS and EN standards







# GROUND MATS



2808B

## Ground Mat

- Ground protection mats for supporting heavy vehicles and machinery on soft or sensitive ground.
- Traction surface on one side.
- Dimension: 2440mm x 1220mm
- Weight: 39 kg
- Less downtime & delays = faster project completion
- Eliminate cost of remediation
- Less project management time and delay on future work
- Improved on-site health & safety



Check out our FAQ video here:  
[www.transquip.co.nz](http://www.transquip.co.nz)

## Ground Mats; Save making a mess!





# TRENCH COVERS

- Lightweight - easy to lift, transport, place and store - no need for expensive lifting equipment
- Moulded anti-slip surface
- Steel bracing for extra strength.
- 100% recyclable.
- Bolts can be fixed in each corner to increase the stability.



2489

## 1400 x 800mm Reinforced Plastic Trench Cover

- Special design of male/female connectors to interlock each road plate without gaps.
- Max load of 600kg over 0.6m wide trench.
- Weighs 19kg approx. per cover.



2490

## 1600 x 1200mm Reinforced Plastic Pedestrian Trench Cover

- Lower edges to minimise trip hazard.
- Weighs 26kg approx. per cover.

### Max load of:

- 350kg over 1.1m wide trench
- 500kg over 0.9m wide trench
- 600kg over 0.7m wide trench
- 700kg over 0.5m wide trench



2492

## 1200 x 800mm Reinforced Plastic Pedestrian Trench Cover

- Lower edges to minimise trip hazard.
- Weighs 13kg approx. per cover.

### Max load of:

- 500kg over 0.9m wide trench
- 600kg over 0.7m wide trench
- 700kg over 0.5m wide trench

# STEEL ROAD PLATES

- Ideal for covering small trenches or driveways to provide light vehicle access.
- Equipped with holes for lifting with chain kits.



2497

- Steel plate 1.2 metres long x 1.2 metres wide x 12mm thick.
- Weighs 125kg approx.



2500

- Steel plate 2.4 metres long x 1.2 metres wide x 12mm thick.
- Weighs 250kg approx.



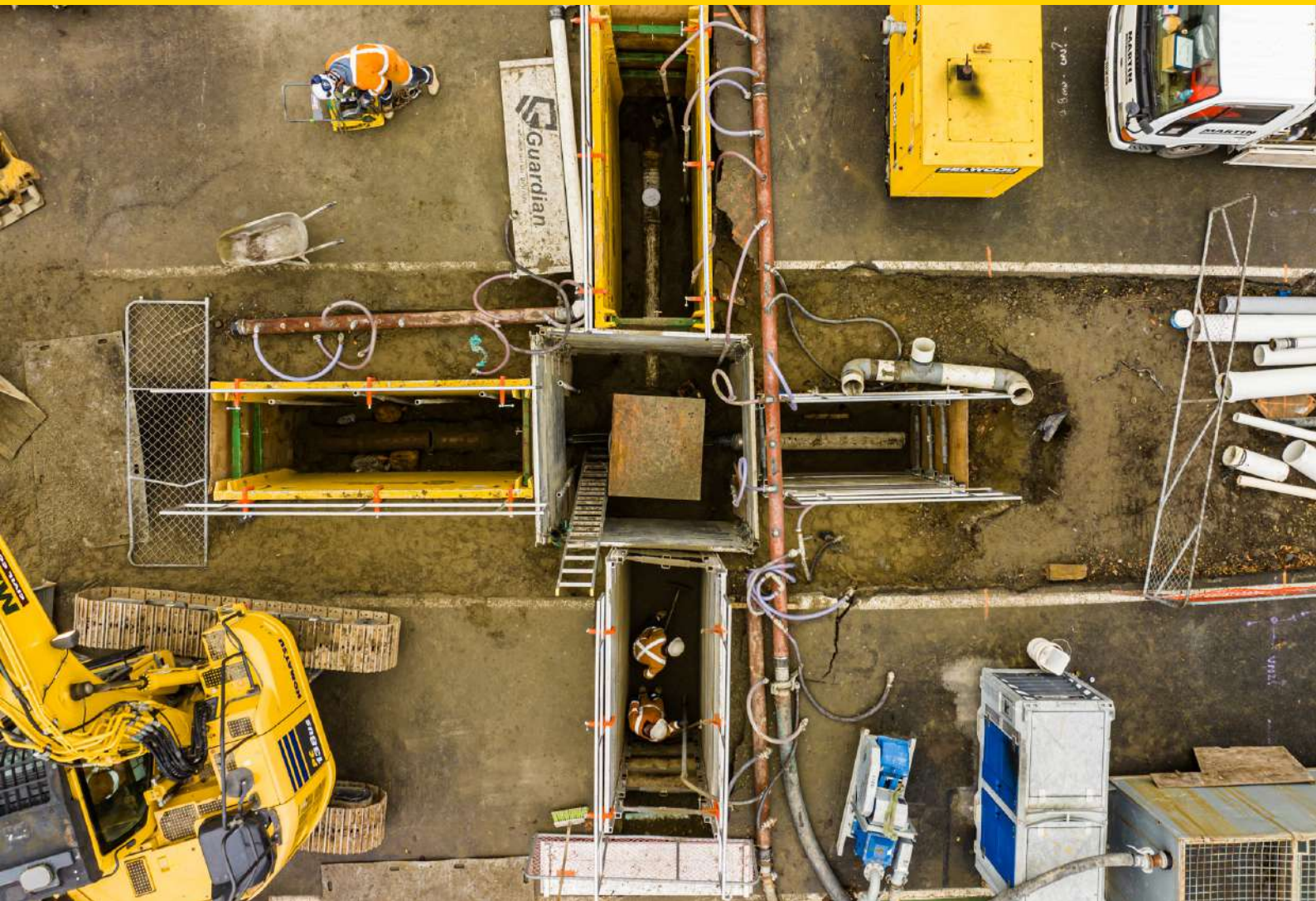
2501

- Steel plate 2.4 metres long x 1.2m wide x 25mm thick
- Weighs 600kg approx.



2502

- Steel plate 2.4 metres long x 1.5 metres wide x 25mm thick.
- Weighs 750kg approx.



***“ This is a great company to deal, with easy to organise equipment and they do what they say they will on time. The trench soldiers are lightweight so they can be installed by hand and create a safe trench which is easy to work in.”***

Gavin Chambers | Mander & Co Ltd

***“ Our guys prefer to use the lightweight shields supplied by Transquip where possible.”***

Gerry Friel | GP Friel Ltd

***“ First and foremost great service & willing to help when required. Hired a trench shield to save time and making a mess by reducing the trench width across a sports ground. Cheers.”***

Brian Foster | MJ Contracting

***“ We had a 2.3m deep sewer connection to make in a back yard and no way of hiring shoring in Wellington. Our digger came available early and without much expectation of help, I contacted TransQuip expecting at best buying some kit and putting the digger off to the next available slot they had for our low priority small job. I made contact on Wednesday morning knowing little about shoring a pit and by Friday lunchtime had a pallet delivered to site with a shoring box. Light enough pieces to carry to the excavation and make the hole safe over the weekend and a special hiab to boot to crane it to the ideal spot on a busy site. Magic.”***

Matt Cantwell | SMRT Contracting



**Contact:**

sales@guardiancivil.co.nz  
Freephone **0508 41 41 41**

**Locations:**

**Christchurch**

2 Edmonton Rd, Hornby 8042

**Auckland**

6a Te Apunga Place, Mount Wellington,  
Auckland 1060

**Business Hours:**

Monday-Friday 7:00am to 5:00pm  
Weekends & Public Holidays: Closed

**[guardiancivil.co.nz](http://guardiancivil.co.nz)**

